

\$631,990 - 32055 Sedge Way, Temecula

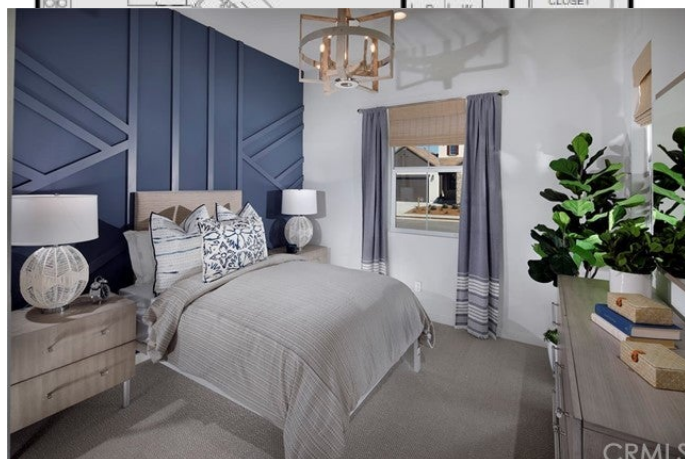
MLS® #EV21136953

\$631,990

2 Bedroom, 2.00 Bathroom, 1,787 sqft
Residential on 0.16 Acres

N/A, Temecula, CA

MLS#EV21136953 ~Built by Taylor Morrison~
Ready January 2022~ Welcome to Plan 1AR
in Esplanade at Sommers Bend - a brand new
55+ community in Temecula, California! This
uniquely designed home is paradise with its
wide-open gathering room and island kitchen
that was created with the chef in mind! This
angled island maximizes the number of cooks
that can work in this kitchen with the perfect
working triangle and corner pantry. Sliding
glass doors next to the dining area open out to
the oversized covered patio bringing in tons of
natural sunlight! The owner's suite is a
true retreat with soaking tub, separate shower,
and dual vanities. Near the front porch entry is
an angled open study that keeps you
connected while providing a private space to
relax or be productive. Complete with one
guest room and full bath, this home has it all!
Enjoy resort-style pools and a state-of-the-art
wellness hub for fun in the sun, plus exclusive
amenities reserved only for those 55 or better,
including a private 55+ clubhouse, miles of
multi-use trails and a 20+ acre sports park.
Esplanade represents a refined, amenity-rich
choice for active lifestyle residents who crave
enriching memories and meaningful
connections. Ideally located near outdoor
recreation, shopping, dining, golf, and of
course, Southern California wine country!
Structural Options added to 32055 Sedge Way
include: none. REPRESENTATIVE PHOTOS
ADDED!



BEDROOM 2

FIRST FLOOR
ELEVATION A

Built in 2022

Essential Information

MLS® #	EV21136953
Price	\$631,990
Bedrooms	2
Bathrooms	2.00
Full Baths	2
Square Footage	1,787
Lot Size	6,839
Year Built	2022
Type	Residential
Status	Pending
# Of Units	1

Community Information

Address	32055 Sedge Way
Area	SRCAR - Southwest Riverside County
Subdivision	N/A
City	Temecula
County	Riverside
State	CA
Zip Code	92591

Amenities

Amenities	Clubhouse, Sport Court, Maintenance Grounds, Pool
Parking Spaces	2
Parking	Driveway, Garage Faces Front, Side By Side
# of Garages	2
Garages	Driveway, Garage Faces Front, Side By Side
View	None
Has Pool	Yes
Pool	Community, Association

Interior

Interior	Carpet, Tile
Interior Features	Coffered Ceiling(s), High Ceilings, Open Floorplan, Pantry, Recessed Lighting, Wired for Data, Bedroom on Main Level, Main Level Master, Walk-In Pantry, Walk-In Closet(s)

Appliances	Dishwasher, Disposal, Gas Range, Microwave, Tankless Water Heater
Heating	Central, Natural Gas
Cooling	Central Air
Fireplace	Yes
Fireplaces	None
# of Stories	1
Stories	One

Exterior

Exterior	Flagstone, Stone Veneer, Stucco
Lot Description	Back Yard, Close to Clubhouse, Near Park, Rectangular Lot
Windows	Double Pane Windows, Insulated Windows, Low Emissivity Windows, Screens
Roof	Composition
Construction	Flagstone, Stone Veneer, Stucco
Foundation	Slab

School Information

District	Temecula Unified
----------	------------------

Additional Information

Date Listed	June 24th, 2021
Days on Market	3
HOA Fees	349.00
HOA Fees Freq.	Monthly

Listing Details

Listing Agent	Leslie Olivo
Listing Office	Taylor Morrison Services

Based on information from California Regional Multiple Listing Service, Inc. as of September 16th, 2021 at 5:34pm PDT. This information is for your personal, non-commercial use and may not be used for any purpose other than to identify prospective properties you may be interested in purchasing. Display of MLS data is usually deemed reliable but is NOT guaranteed accurate by the MLS. Buyers are responsible for verifying the accuracy of all information and should investigate the data themselves or retain appropriate professionals. Information from sources other than the Listing Agent may have been included in the MLS data. Unless otherwise specified in writing, Broker/Agent has not and will not verify any information obtained from other sources. The Broker/Agent providing the information contained herein may or may not have been the Listing and/or Selling Agent.