

\$2,750,000 - 1150 S Hayworth Avenue, Los Angeles

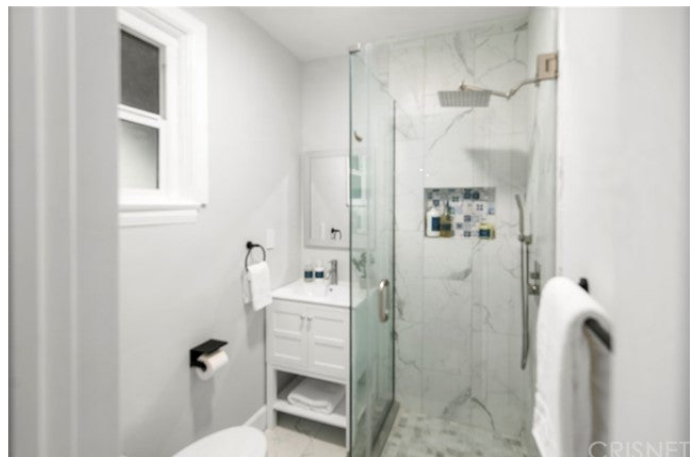
MLS® #SR21145253

\$2,750,000

6 Bedroom, 4.00 Bathroom, 3,798 sqft
Residential on 0.14 Acres

N/A, Los Angeles, CA

Investment, Investment, Investment!!!! Fantastic 1920s Spanish completely remodeled duplex minutes away from Beverly Hills these newly remodeled and updated units are great for a investment or owner user. Exceptional income producing property potentially renting out both units or live in one and rent the other one. The two car detached garage can be converted into an ADU with the cities approval for extra income or a in-law suite. Thereâ€™s high rental comps in the area and so much potential with this authentic Spanish duplex. This incredible property offers each unit with three bedrooms, two baths, primary bathroom has a beautiful soaking tub and stand alone shower. The large kitchen with over-sized island great for preparing food or just sitting around having an informal meal, new top-of-line stainless appliances and built-in wine cooler, large formal dining area, and separate laundry room with side by side washer and dryer. Enjoy the open floor plan, large living room with fireplace, secluded study/office, high ceilings, original archways, and abundant natural light fill each unit that are just under 2000 square feet. While keeping the authentic character and charm of this Spanish style treasure with a modern flair still maintains the integrity and architecture that is reminiscent of the 1920s The newly lush landscaped backgrounds lend themselves to alfresco dining with a fire grille island or just sit and relax in this peaceful atmosphere after a hard day at the office or just shopping in



Beverly Hills.

Built in 1929

Essential Information

MLS® #	SR21145253
Price	\$2,750,000
Bedrooms	6
Bathrooms	4.00
Full Baths	4
Square Footage	3,798
Lot Size	6,001
Year Built	1929
Type	Residential
Sub-Type	Single Family Residence
Status	Active
# Of Units	2

Community Information

Address	1150 S Hayworth Avenue
Area	699 - Not Defined
Subdivision	N/A
City	Los Angeles
County	Los Angeles
State	CA
Zip Code	90035

Amenities

Parking Spaces	2
Parking	Garage, Oversized
# of Garages	2
Garages	Garage, Oversized
View	None
Pool	None

Interior

Interior Features	Bedroom on Main Level, Multiple Master Suites
Cooling	None

Fireplace	Yes
Fireplaces	Wood Burning
Stories	Multi/Split

Exterior

Lot Description	2-5 Units/Acre
-----------------	----------------

School Information

District	Los Angeles Unified
----------	---------------------

Additional Information

Date Listed	June 22nd, 2021
Days on Market	106
Zoning	LAR2
HOA Fees	0.00

Listing Details

Listing Agent	Alexis Nassif
Listing Office	Berkshire Hathaway HomeServices California Properties

Based on information from California Regional Multiple Listing Service, Inc. as of October 17th, 2021 at 5:16am PDT. This information is for your personal, non-commercial use and may not be used for any purpose other than to identify prospective properties you may be interested in purchasing. Display of MLS data is usually deemed reliable but is NOT guaranteed accurate by the MLS. Buyers are responsible for verifying the accuracy of all information and should investigate the data themselves or retain appropriate professionals. Information from sources other than the Listing Agent may have been included in the MLS data. Unless otherwise specified in writing, Broker/Agent has not and will not verify any information obtained from other sources. The Broker/Agent providing the information contained herein may or may not have been the Listing and/or Selling Agent.